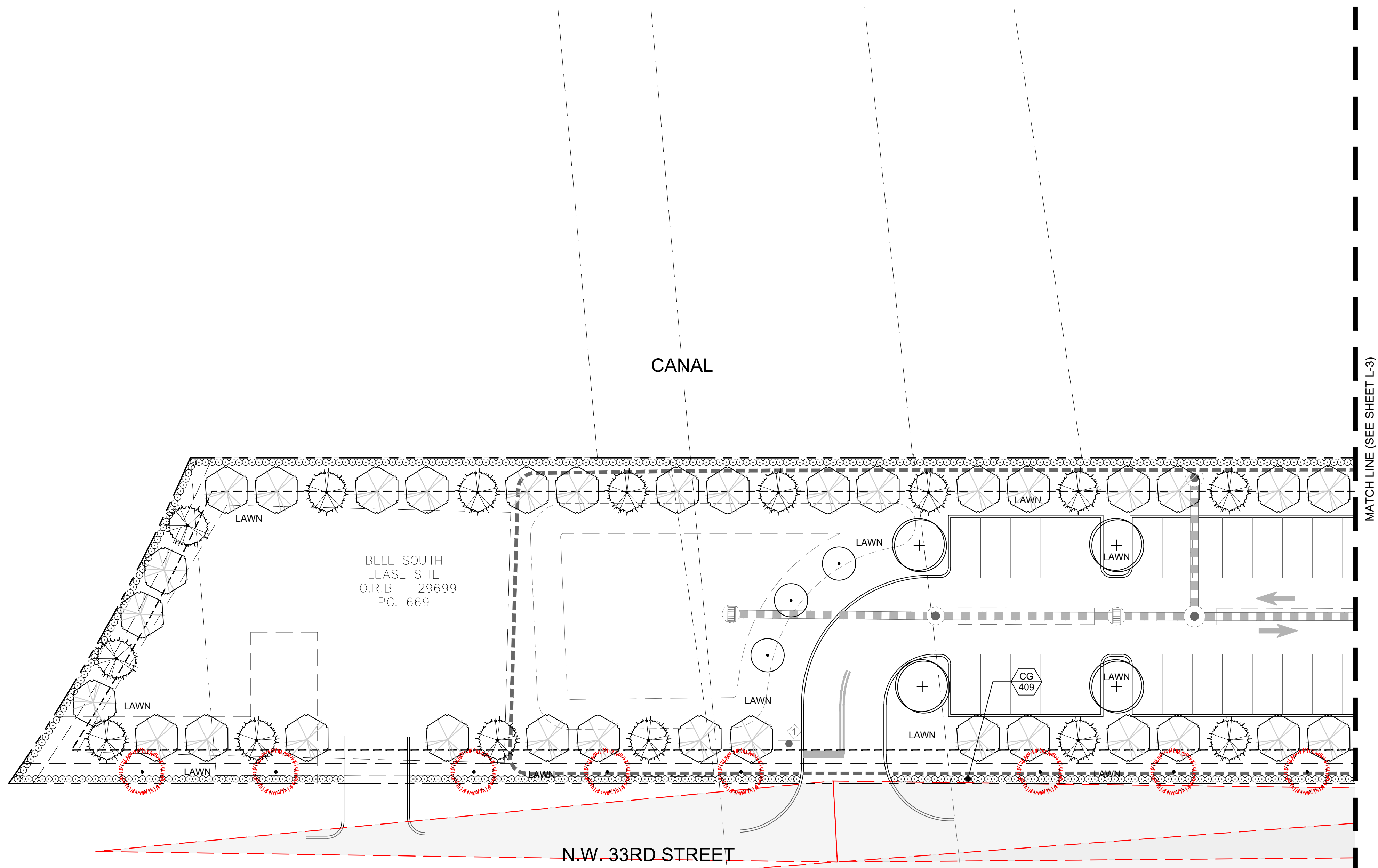


Note: Visibility and unobstructed working space must be maintained from fire apparatus access routes to fire protection and life safety appliances/equipment. The only landscaping should be grass or mulch no plants or shrubs. These include but not limited to: Fire hydrants, fire department connections (FDC), post indicating valves (PIV), fire sprinkler risers, fire alarm control panels and electrical room locations require a minimum 36-inch clearance path to and on all sides. Fire hydrants require 36-inch clear space each side and rear with a 60-inch wide clear access from the fire apparatus access to fire hydrant. (NFPA 1-2021 Ch. 18 Sec. 18.5.7)



MATCH LINE (SEE SHEET L-3)